


nplan | STRONG POLICY & LEGAL ANALYSIS INSTRUMENT TO PROMOTE EQUITY AND EQUITY | phlp public health law a policy


Complete Streets for Healthy Communities

Sara Zimmerman, JD
Complete Streets Webinar
January 12, 2010



Today's Roadmap

- The Role of Policy**
 - What is a model policy?
 - Why is policy important?
- Model Complete Streets Policies**
 - Approach
 - Benefits of different types of policy
 - How to use these models



What is a model policy?

- A legal tool that provides a strong general starting place for a community's policy needs
- A living document
- A set of questions



Our Approach to Model Policy

Criteria	Process	Features
<ul style="list-style-type: none"> - Legally sound - Strong - Realistic 	<ul style="list-style-type: none"> - Survey of existing policies - Analysis of legal issues - Expert review & revision 	<ul style="list-style-type: none"> - Comments to explain important provisions or options - Tailored to community's needs

Why is policy important?


Policies can:

- > engage community members and local leaders
- > institutionalize change
- > ensure consistent implementation
- > allow for enforcement



Model Complete Streets Policies

- Approach taken by policies
- Benefits of different types of policy (law, resolution, or comprehensive plan language)
- How to use these models



The Approach

- ✓ Flexible
- ✓ Forward looking

Approach is a response to 2 challenges

No One Size Fits All Solution: Flexibility

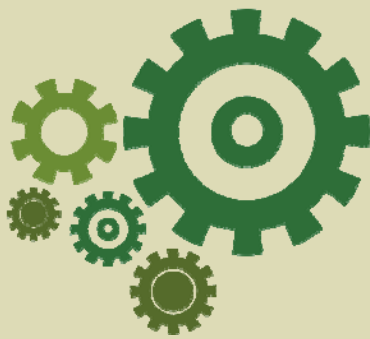
- Many different kinds of streets in this country
- Many complex local factors to balance
- All streets don't need to look or be the same in order to meet the needs of different users

Funding

- Retrofitting streets is expensive
- Forward looking approach



How do the policies work?



First key feature of policies

Establish a new approach to street design and transportation planning.

“Agencies shall make Complete Streets practices a **routine part** of everyday operations, shall approach **every transportation project as an opportunity** to improve Streets and the transportation network for all Users, and shall **work in coordination** with other departments, agencies, and jurisdictions to achieve Complete Streets.”

Second key feature of policies

Require needs of each user to be accounted for in every new street and new project on an existing street.

“Every street project shall incorporate complete streets infrastructure sufficient to enable reasonably safe travel along and across the right of way for each category of users.”



Exceptions process

Considerable flexibility to communities through several exceptions:

- Bicyclists or pedestrians barred by law
- Disproportionate cost or absence of current and future need
- Infrastructure would be unreasonable or inappropriate in light of the scope of the project

Exceptions provide for flexibility and accountability

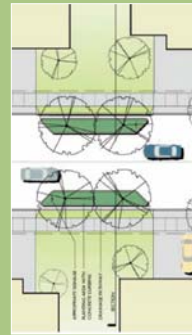
Flexibility. *These exceptions are very broad.*

Accountability. *But, they can only be exercised where there is:*

- Written approval by a senior manager
- Data and documentation supporting the need for the exception



The policies also provide for:



- Revisions to plans and policies
- Data and benchmarks
- Increased public participation
- Consideration of new developments' impact on safe travel
- Establishment of committee

These provisions can be included or excluded as desired.



Our Upcoming Complete Streets Policy Package Includes:

- ✓ Resolutions
- ✓ Laws
- ✓ Comprehensive plan language
- ✓ Findings that support policy adoption



Which type of policy should your community adopt?

- ✓ Law or resolution
- ✓ Language for comprehensive plan

Resolutions vs. Laws

In general...

- Resolutions express a commitment to a goal, but are not as binding or enforceable as laws
- Resolutions easier to pass
- Resolutions can be a great first step
- Laws are more rigorous
- Laws more likely to lead to more change

What is a Comprehensive Plan?

- Document that sets out a community's vision for its future and provides a detailed long-term plan for its physical and economic development

Differ from State to State

In different states comprehensive plans may have:

- Different names
- Divided into different required topic areas:
 - Streets/transportation
 - Future land use
 - Housing
- Different legal weight or effect

Our Model Comprehensive Plan Language

- Streets/Transportation: Thorough provision for complete streets and a transportation network for all
- Develop connections with other agencies/community resources...
 - Land use
 - Schools
 - Parks
 - Health
- Integrate active transportation into more departments
- Assist in implementation



Using a model policy involves:

Local Needs

Political Power

Consulting a Local Attorney

Summary

- Our model policies provide a strong starting place.
- Best policy for your community—the one that addresses your needs and can be passed and implemented.
- Modify policies to meet your needs.



nplan

PLANNING, POLICY & LEGAL ANALYSIS NETWORK
TO PROMOTE SUSTAINABLE GROWTH

phlpnet
public health
law & policy

Sara Zimmerman, JD

Staff Attorney

www.nplan.org • szimmerman@phlpnet.org • (510) 302-3303

2201 Broadway, Suite 502, Oakland, CA 94612