


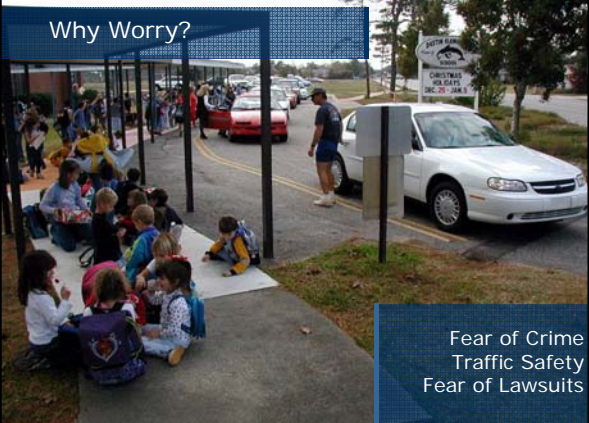
Safe Routes to School
NATIONAL PARTNERSHIP

Liability and the Active Trip to School

Robert Ping
State Network Director



Why Worry?



Fear of Crime
Traffic Safety
Fear of Lawsuits

Risk Averse Society?



Cars
Inactivity
Pollution

Really?



Perception:

- Walking and Biking is dangerous
- 60% of Americans say they would ride if it was safer
- Lack of thought about actual risks in society




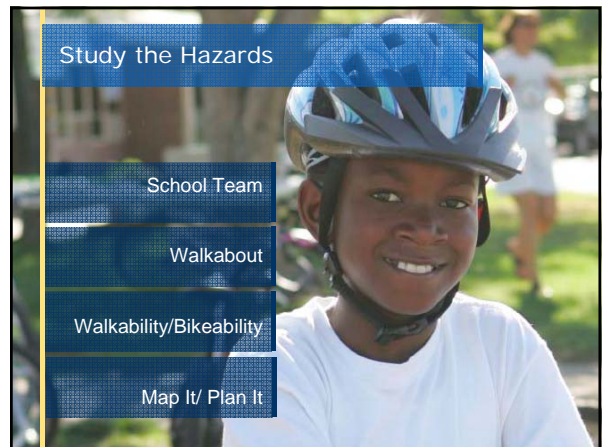
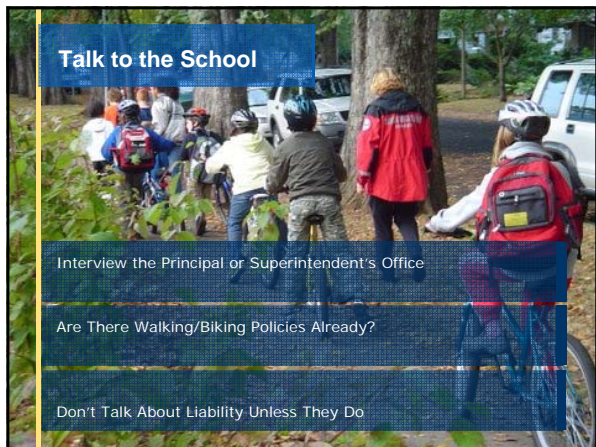
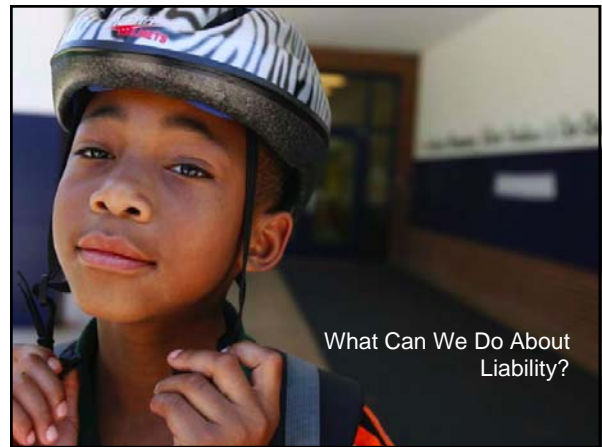
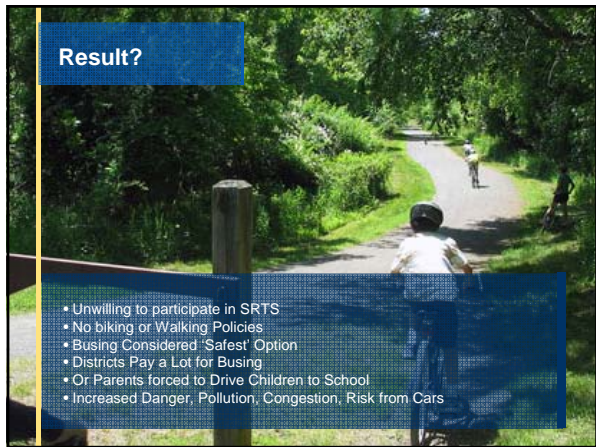
Causes of Death - 2007

Heart Disease and Cancer = 1,178,942

Car Crashes = 41,059

Stranger Abduction = 115





The E's

- Engineering and Enforcement
- Encouragement
- Education

Due Diligence

- Implement and Follow Your Plan
- Plan Should Show How Hazards Are Being Addressed
- You Cannot Ever Guarantee Safety!

Voluntary

- Make Program Activities Volunteer-Led
- School is Responsible for Kids if Activity is Theirs
- Parents Can Opt In or Not

Insurance?

- Will Insurer Cover Activities?
- Is this Necessary on Public Streets?
- School is Not Responsible for Infrastructure Off-Campus

Portland, Oregon

- School District CFO/Risk Mgmt Not Worried At All
- ES Principal - Changed Mind: Education Classes/W/SB
- MS Principal - Changed Mind: Walking and Crossings

Rural Oregon

- Middle School Girl Killed by SUV in Street - No Sidewalks
- Next Day 150 More Cars at School - Increased Risk
- SRTS Now Very Desirable - No Lawsuit

Maple Ave Middle School, Saratoga Springs, NY



- No biking policy
- School board has since changed policy



Thank you!



Robert Ping
robert@saferoutespartnership.org
503.289.0441

