

## community gardens & public health

why should public health be involved with gardens?

why think about policy?

what is the role of local government in gardens?

Christine Fry, MPP  
NPLAN Policy & Program Associate



what **grows** from community gardens?

better health



improved economy



community cohesion

Saldivar-Tanaka & Krasny, 2004  
Kuo & Sullivan, 2001

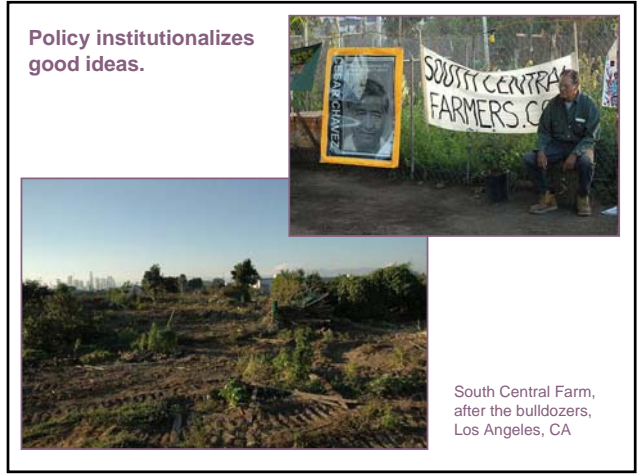


National Day of Action Eat-In Potluck  
Milagro Allegro Community Garden, Highland Park, CA

why think about policy?

Policy determines what your environment looks like.





what is the role of local government?



create supportive policies

- > land use policies
- > local resolutions



provide access to public land

- > land inventories
- > underutilized city lots
- > parks, municipal facilities, median strips



provide program support

- > money
- > in-kind resources
- > coordination
- > liability coverage



what can you do right now?

- > ask your local planner if gardens are an allowed use
- > talk to potential partners
- > map out current gardens and underutilized spaces
- > explore your local food system

"...some look down their noses at greening as though it's all about making a place pretty. That [it's] not an important public policy question. ... it's a whole lot more than making a place pretty. It's about creating places that are supportive for people."

--- Bill Sullivan, University of Illinois



#### Resources & Citations

All of the citations and recommended resources, along with these slides, will be available at [www.nplanonline.org](http://www.nplanonline.org) after the webinar.

#### Photo Credits

Several photos courtesy of Lydia Daniller

Several photos courtesy of Redwood Heights School Garden OUSD

Alemany Farm, by Walter Parenteau, <http://www.flickr.com/photos/mwparenteau/2272679049/>

Eat-In Potluck Harvest at Milagro Allegro Community Garden, by waltarrrrr, <http://www.flickr.com/photos/waltarrrrr/3904101079/>

South Central Farm – July 9<sup>th</sup>, 2006, by stillthedudeabides, <http://www.flickr.com/photos/stillthedudeabides/sets/72157594154238410/>

Huge Harvest Bag, by meganpru, <http://www.flickr.com/photos/meganpru/3690871939/>

Hazelnut Community Garden Funded by United Way of the Lower Mainland, by United Way of Lower Mainland, <http://www.flickr.com/photos/36978292@N08/3864835073/>

Community garden in Concord, by Marian Dork, <http://www.flickr.com/photos/anarchitect/3846389301/>

key blvd community garden, by rachaelvoorhees, <http://www.flickr.com/photos/rachaelvoorhees/436015351/>